

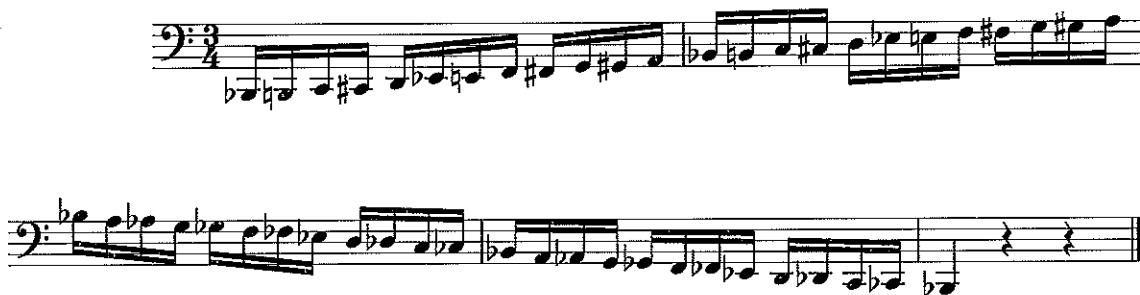
# SWOSU Band Camp Audition Material

## Tuba

1. Prepare the attached Etude No. 1 to be considered for the top 3 bands at the camp (High School age or advanced Middle School Students). Prepare the attached Etude No. 2 to be considered for the lower 2 bands (Middle School Students).
2. Prepare the below scales. The scales do not need to be memorized or in multiple octaves.
3. Each student will also sight-read the same exercise during the audition.

### Scales:

1 or 2 octave chromatic scale (2 octave shown below)



F Major 1 or 2 octaves (2 octaves shown below)



C Major



# SWOSU Band Camp

## Tuba - Etude No. 1

Allegro

Musical score for Tuba - Etude No. 1, Allegro. The score consists of four staves of music in bass clef, 2/4 time, and B-flat major. The first staff begins with a piano (*p*) dynamic. The second staff features a forte (*f*) dynamic followed by a piano (*p*) dynamic. The third staff features a forte (*f*) dynamic followed by a piano (*p*) dynamic. The fourth staff concludes the piece with a double bar line.

# SWOSU Band Camp

## Tuba - Etude No. 2 (Middle School)

Moderato

Musical score for Tuba - Etude No. 2 (Middle School), Moderato. The score consists of two staves of music in bass clef, 4/4 time, and B-flat major. The first staff begins with a piano (*p*) dynamic and features a slur over the first four measures, followed by a fermata. The second staff features a slur over the first four measures, followed by a fermata, and then a piano (*p*) dynamic. The piece concludes with a double bar line.