

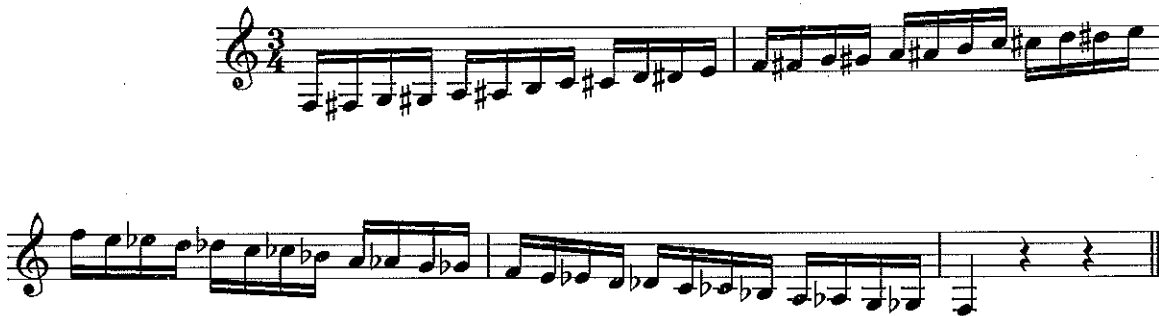
SWOSU Band Camp Audition Material

Low Clarinet

1. Prepare the attached Etude No. 1 to be considered for the top 3 bands at the camp (High School age or advanced Middle School Students). Prepare the attached Etude No. 2 to be considered for the lower 2 bands (Middle School Students).
2. Prepare the below scales. The scales do not need to be memorized or in multiple octaves.
3. Each student will also sight-read the same exercise during the audition.

Scales:

1 or 2 octave chromatic scale (2 octave shown below)



F-Major 1 or 2 octaves (2 octaves shown below)



E-Flat Major



SWOSU Band Camp Low Clarinets - Etude No. 1

Musical score for Low Clarinets - Etude No. 1, SWOSU Band Camp. The score is written in 4/4 time with a key signature of two flats (B-flat and E-flat). It consists of four staves of music. The first staff begins with a dynamic marking of *mp* and features a slur over the first two measures, with an accent (^) above the second measure. The second staff continues the melodic line with a slur over the first three measures. The third staff features a series of eighth-note patterns with slurs. The fourth staff begins with a double bar line, followed by a dynamic marking of *mf* and a slur over the first three measures.

SWOSU Band Camp Low Clarinets - Etude No. 2 (Middle School)

Andante ♩ = 76

Musical score for Low Clarinets - Etude No. 2 (Middle School), SWOSU Band Camp. The score is written in 4/4 time with a key signature of two flats (B-flat and E-flat). It consists of two staves of music. The first staff begins with a dynamic marking of *mp* and features a slur over the first three measures, with an accent (^) above the fourth measure. The second staff begins with a dynamic marking of *mf* and features a slur over the first three measures, with a *rit.* marking above the fourth measure.